

affordable housing  
at its best



sark   
TOWNHOMES

a place to refresh. a place to retreat.





east facing

Plot Area - 150 - 167 sqyd

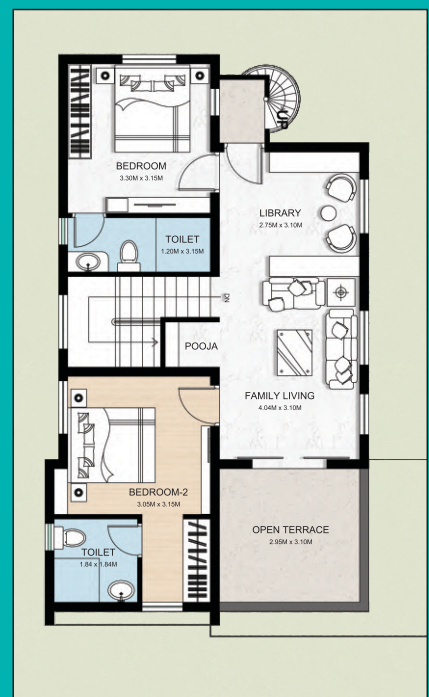
Total Built-up Area - 1500 -1600 sft



Sark Townhomes offers Budgeted Villas of G+1 - 3 BHK, with classic Clubhouse and Amenities. These 150+ spacious homes offer the best of modern living with distinctive finishes and options, exude style, timeless elegance and supreme comfort. Home features include spacious floorplans, green spaces and much more.



GROUND FLOOR



FIRST FLOOR

\* indicative floor plans only

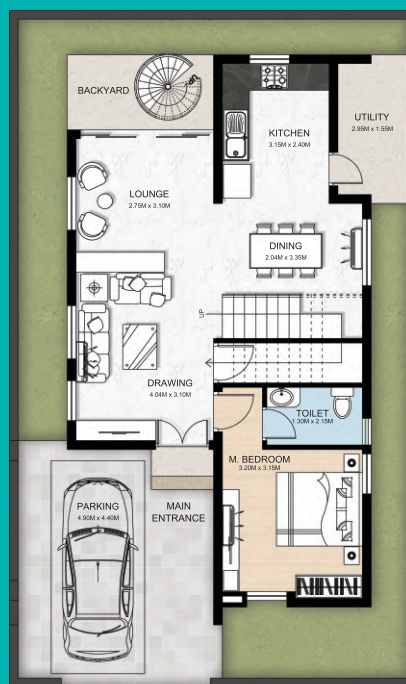


west facing

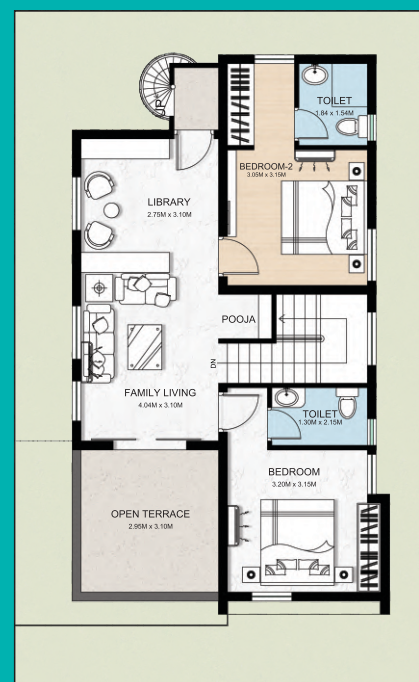
Plot Area - 150 - 167 sqyd  
Total Built-up Area - 1500 -1600 sft



Sark Townhomes is located in the close vicinity of RRR. 30 minutes drive from Financial District, and well connected to super markets, educational institutions and others. Go beyond the ordinary at affordable price to immerse in blissful living. Sark Townhomes is built on our experience, with expertise and deliverance track record of successful projects thus far.



GROUND FLOOR



FIRST FLOOR

\* indicative floor plans only



Life at Sark Townhomes is like nowhere else.  
Comfort, convenience and peace of mind  
comes within your budget.



## Clubhouse

- Swimming Pool
- Banquet Hall
- Children Recreation Area
- Indoor Games

## Project Highlights

- Vastu Compliant
- Lush Green Areas
- Round the clock security
- CC Cameras at the entrance
- Tree Lined Avenues
- Sewerage Treatment Plant
- Underground Cabling
- Stand by Power Supply
- Broad Band Connectivity
- Black Topped roads with side walks

RERA No.: P02400000357



Corporate Office: 6th Floor, Plot No. 4, Survey No. 192, Above Cafe Coffee Day  
Botanical Garden Road, Masjid Banda, Kondapur, Hyderabad, TS -500 084

**Call: 9000 900 257 / 9100 44 2862 / 9000 900 653**

info@sarkprojects.in | www.sarkprojects.in

Note : This Folder is purely a conceptual presentation and not a legal offering. The promoters reserve the right to make changes in elevation, specifications and plans as deemed fit. All dimensions to be converted into metric system.