

Life at Sark South Townhomes is like nowhere else. Comfort, convenience and peace of mind comes within your budget.

affordable housing at its best



Clubhouse

- Swimming Pool
- Banquet Hall
- Children Recreation Area
- Indoor Games

Project Highlights

- Vastu Compliant
- Lush Green Areas
- Round the clock security
- CC Cameras at the entrance
- Tree Lined Avenues
- Sewerage Treatment Plant
- Underground Cabling
- Stand by Power Supply
- Broad Band Connectivity
- Black Topped roads with side walks



Corporate Office: 6th Floor, Plot No. 4, Survey No. 192, Above Cafe Coffee Day
Botanical Garden Road, Masjid Banda, Kondapur, Hyderabad, TS -500 084

info@sarkprojects.in | www.sarkprojects.in

sark  south
TOWNHOMES

@ TUKKUGUDA

a place to refresh. a place to retreat.



Note : This Folder is purely a conceptual presentation and not a legal offering. The promoters reserve the right to make changes in elevation, specifications and plans as deemed fit. All dimensions to be converted into metric system.

east facing

Plot Area - 165 sqyd
Total Built-up Area - 1600 sft



west facing

Plot Area - 165 sqyd
Total Built-up Area - 1600 sft



Sark South Townhomes offers Budgeted Villas of G+1 - 3 BHK, with classic Clubhouse and Amenities. These 250+ spacious homes offer the best of modern living with distinctive finishes and options, exude style, timeless elegance and supreme comfort. Home features include spacious floor plans, green spaces and much more.



GROUND FLOOR



FIRST FLOOR

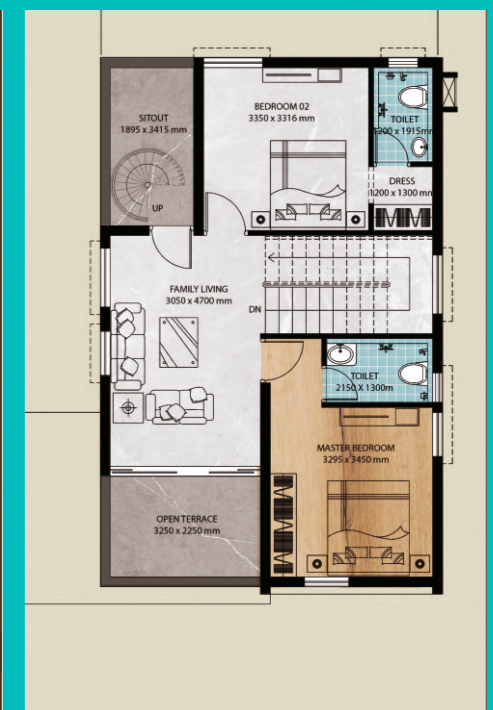


* indicative floor plans only

Sark South Townhomes is located in the close vicinity of ORR at Exit No.14, 15 minutes drive from Adibatla, 10 minutes drive from Pharma City and well connected to super markets, educational institutions and others. Go beyond the ordinary at affordable price to immerse in blissful living. Sark South Townhomes is built on our experience, with expertise and deliverance track record of successful projects thus far.



GROUND FLOOR



FIRST FLOOR



* indicative floor plans only